

# Fuse Blocks

Marathon Special Products

## Class H & K – 250 Volt

Catalog Number		Pole	Amp	Base Material	Load Termination	Wire Range
Standard	Reinforced					
F30A1S	RF30A1S	1				
F30A2S	RF30A2S	2	30	Thermoplastic	Wire Binding Screw	#10 - #22 AWG CU
F30A3S	RF30A3S	3				
F30A1SP	RF30A1SP	1				
F30A2SP	RF30A2SP	2	30	Thermoplastic	SEMS Pressure Screw	#10 - #14 AWG CU
F30A3SP	RF30A3SP	3				
F30A1B	RF30A1B	1				
F30A2B	RF30A2B	2	30	Thermoplastic	Box Connector	#6 - #14 AWG CU
F30A3B	RF30A3B	3				
F60A1SQ	RF60A1SQ	1				
F60A2SQ	RF60A2SQ	2	60	Thermoplastic	Male Quick Connect	#10 - #22 AWG CU
F60A3SQ	RF60A3SQ	3				
F60A1B	RF60A1B	1				
F60A2B	RF60A2B	2	60	Thermoplastic	Box Connector	#2 - #14 AWG CU / #2 - #12 AWG AL
F60A3B	RF60A3B	3				
-	RF100A1B	1				
-	RF100A2B	2	100	Phenolic	Box Connector	2/0 - #14 AWG CU / 2/0 - #12 AWG AL
-	RF100A3B	3				
-	F200A1BE	1	200	Polyester	Box Connector	250MCM - #6 AWG CU AL
-	F200A3BE	3				
-	RF400A1B	1	400	Phenolic	Box Connector	(2) 350MCM - #1/0 AWG CU AL
-	RF400A3B	3				
F600A1B	-	1	600	Phenolic	Box Connector	(2) 500MCM - 1/0 AWG CU AL
F600A3B	-	3				

## Class H & K – 600 Volt

Catalog Number		Pole	Amp	Base Material	Load Termination	Wire Range
Standard	Reinforced					
6F30A1S	R6F30A1S	1				
6F30A2S	R6F30A2S	2	30	Thermoplastic	Wire Binding Screw	#10 - #22 AWG CU
6F30A3S	R6F30A3S	3				
6F30A1SP	R6F30A1SP	1				
6F30A2SP	R6F30A2SP	2	30	Thermoplastic	SEMS Pressure Screw	#10 - #14 AWG CU
6F30A3SP	R6F30A3SP	3				
6F30A1B	R6F30A1B	1				
6F30A2B	R6F30A2B	2	30	Thermoplastic	Box Connector	#6 - #14 AWG CU
6F30A3B	R6F30A3B	3				
6F60A1B	R6F60A1B	1				
6F60A2B	R6F60A2B	2	60	Thermoplastic	Box Connector	#2 - #14 AWG CU / #2 - #12 AWG AL
6F60A3B	R6F60A3B	3				
-	R6F100A1B	1				
-	R6F100A2B	2	100	Phenolic	Box Connector	2/0 - #14 AWG CU / 2/0 - #12 AWG AL
-	R6F100A3B	3				
-	6F200A1BE	1	200	Polyester	Box Connector	250MCM - #6 AWG CU AL
-	6F200A3BE	3				
-	R6F400A1B	1	400	Polyester	Box Connector	(2) 350MCM - #1/0 AWG CU AL
-	R6F400A3B	3				
6F600A1B	-	1	600	Polyester	Box Connector	(2) 500MCM - #1/0 AWG CU AL
6F600A3B	-	3				



F30A3SP



6F30A3B

### Specifications:

- Approved for 10,000 Amp Withstand Rating and Short Circuit Current Ratings (SCCR)
- RoHS Compliant



### 30 & 60 Amp:

- Clip, Copper Alloy, Tin Plated
- Patented Cool-Clip Design

### 100 Amp:

- Clip, Copper Alloy, Tin Plated

### 200 Amp:

- Clip, One Piece Aluminum, Tin Plated

### 400 & 600 Amp:

- Clip, Copper Alloy, Tin Plated

# Fuse Blocks

Marathon Special Products

## Class R – 250 Volt

Catalog Number		Pole	Amp	Base Material	Load Termination	Wire Range
Standard	Reinforced					
-	R30A1S	1				
-	R30A2S	2	30	Thermoplastic	Wire Binding Screw	#10 - #22 AWG CU
-	R30A3S	3				
-	R30A1SP	1				
-	R30A2SP	2	30	Thermoplastic	SEMS Pressure Screw	#10 - #14 AWG CU
-	R30A3SP	3				
-	R30A1B	1				
-	R30A2B	2	30	Thermoplastic	Box Connector	#6 - #14 AWG CU
-	R30A3B	3				
-	R60A1SQ	1				
-	R60A2SQ	2	60	Thermoplastic	Wire Binding Screw	#10 - #22 AWG CU
-	R60A3SQ	3				
-	R60A1B	1				
-	R60A2B	2	60	Thermoplastic	Box Connector	#2 - #14 AWG CU / #2 - #12 AWG AL
-	R60A3B	3				
-	R100A1B	1				
-	R100A2B	2	100	Phenolic	Box Connector	2/0 - #14 AWG CU / 2/0 - #12 AWG AL
-	R100A3B	3				
-	R200A1BE	1	200	Polyester	Box Connector	250MCM - #6 AWG CU AL
-	R200A3BE	3				
-	R400A1B	1	400	Phenolic	Box Connector	(2) 350MCM - #1/0 AWG CU AL
-	R400A3B	3				
R600A1B	-	1	600	Phenolic	Box Connector	(2) 500MCM - #1/0 AWG CU AL
R600A3B	-	3				

## Class R – 600 Volt

Catalog Number		Pole	Amp	Base Material	Load Termination	Wire Range
Standard	Reinforced					
-	6R30A1S	1				
-	6R30A2S	2	30	Phenolic	Wire Binding Screw	#10 - #22 AWG CU
-	6R30A3S	3				
-	6R30A1SP	1				
-	6R30A2SP	2	30	Phenolic	SEMS Pressure Screw	#10- #14 AWG CU
-	6R30A3SP	3				
-	6R30A1B	1				
-	6R30A2B	2	30	Phenolic	Box Connector	#6 - #14 AWG CU
-	6R30A3B	3				
-	6R60A1B	1				
-	6R60A2B	2	60	Phenolic	Box Connector	#2 - #14 AWG CU / #2 - #12 AWG AL
-	6R60A3B	3				
-	6R100A1B	1				
-	6R100A2B	2	100	Phenolic	Box Connector	2/0 - #14 AWG CU / 2/0 - #12 AWG AL
-	6R100A3B	3				
-	6R200A1BE	1	200	Polyester	Box Connector	#250 - #6 AWG CU AL
-	6R200A3BE	3				
-	6R400A1B	1	400	Phenolic	Box Connector	(2) 350MCM - #1/0 AWG CU AL
-	6R400A3B	3				
6R600A1B	-	1	600	Phenolic	Box Connector	(2) 500MCM - #1/0 AWG CU AL
6R600A3B	-	3				

### Specifications:

- Tested and Approved for 200,000 Amp Withstand Rating and Short Circuit Current Ratings (SCCR)
- RoHS Compliant



### 30 & 60 Amp:

- Clip, Copper Alloy, Tin Plated, with Patented Reject Member
- Patented Cool-Clip Design

### 100 Amp:

- Clip, Copper Alloy, Tin Plated, with Reject Pin

### 200 Amp:

- Clip, One Piece Aluminum, Tin Plated with Reject Pin

### 400 & 600 Amp:

- Clip, Copper Alloy, Tin Plated, with Rejection Pin



R30A3S



6R30A3B

# Fuse Blocks

Marathon Special Products

## Class J – 600 Volt

Catalog Number		Pole	Amp	Base Material	Load Termination	Wire Range
Standard	Reinforced					
6J30A1S	R6J30A1S	1				
6J30A2S	R6J30A2S	2	30	Thermoplastic	Wire Binding Screw	#10 - #22 AWG CU
6J30A3S	R6J30A3S	3				
6J30A1SP	R6J30A1SP	1				
6J30A2SP	R6J30A2SP	2	30	Thermoplastic	SEMS Pressure Screw	#10 - #14 AWG CU
6J30A3SP	R6J30A3SP	3				
6J30A1B	R6J30A1B	1				
6J30A2B	R6J30A2B	2	30	Thermoplastic	Box Connector	#6 - #14 AWG CU
6J30A3B	R6J30A3B	3				
6J60A1B	R6J60A1B	1				
6J60A2B	R6J60A2B	2	60	Thermoplastic	Box Connector	#2 - #14 AWG CU AL
6J60A3B	R6J60A3B	3				
-	R6J100A1B	1	100	Phenolic	Box Connector	2/0 - #14 AWG CU / 2/0 - #12 AWG AL
-	R6J100A3B	3				
-	6J200A1BFBD	1	200	Phenolic	Box Connector	250MCM - #6 AWG CU AL
-	6J200A3BFBD	3				
-	6J400A1BFBD	1	400	Phenolic	Box Connector	(2) 350MCM - #6 AWG CU AL
-	6J400A3BFBD	3				
-	6J600A1BFBD	1	600	Phenolic	Box Connector	(2) 500MCM - #4 AWG CU AL
-	6J600A3BFBD	3				

### Specifications:

- Tested and Approved for 200,000 Amp Withstand Rating and Short Circuit Current Ratings (SCCR)
- RoHS Compliant



### 30 & 60 Amp:

- Clip, Copper Alloy, Tin Plated
- Patented Cool-Clip Design
- Integral DIN Rail Mount and Expander Block (Available only on 30 Amp)

### 100 Amp:

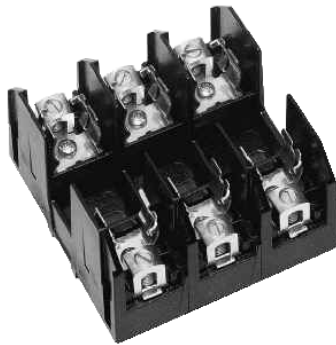
- Clip Copper Alloy, Tin Plated
- 1-Pole Molding Incorporates a Dovetail Feature for Ganging Multiple Poles

### 200 Amp:

- Connector, One Piece Aluminum, Tin Plated (Optional one piece copper, nickel plated add "CU")
- FDB, Fuse Bolt-Down Construction

### 400 & 600 Amp:

- Connector, One Piece Aluminum, Tin Plated (Optional one piece copper, nickel plated add "CU")
- FDB, Fuse Bolt-Down Construction



6J60A3B

## Class M – 600 Volt

Catalog Number	Pole	Amp	Base Material	Load Termination	Wire Range
6M30A1SQ	1				
6M30A2SQ	2	30	Thermoplastic	Wire Binding Screw	#10 - #22 AWG CU
6M30A3SQ	3				
6M30A1SPQ	1				
6M30A2SPQ	2	30	Thermoplastic	SEMS Pressure Screw	#10 - #14 AWG CU
6M30A3SPQ	3				
6M30A1B	1				
6M30A2B	2	30	Thermoplastic	Box Connector	#6 - #14 AWG CU
6M30A3B	3				



6M30A3SPQ

### Specifications:

- Tested and Approved for 100,000 Amp Withstand Rating and Short Circuit Current Ratings (SCCR)
- Clip, Copper Alloy, Tin Plated
- Quick Connect Standard with Screw (S) or Sems Pressure (SP)
- RoHS Compliant



# Fuse Blocks

Marathon Special Products

## Class CC – 600 Volt

Catalog Number	Pole	Amp	Base Material	Load Termination	Wire Range
6CC30A1SQ	1				
6CC30A2SQ	2	30	Thermoplastic	Wire Binding Screw	#10 - #22 AWG CU
6CC30A3SQ	3				
6CC30A1SPQ	1				
6CC30A2SPQ	2	30	Thermoplastic	SEMS Pressure Screw	#10 - #14 AWG CU
6CC30A3SPQ	3				
6CC30A1B	1				
6CC30A2B	2	30	Thermoplastic	Box Connector	#6 - #14 AWG CU
6CC30A3B	3				

### Specifications:

- Tested and Approved for 200,000 Amp Withstand Rating and Short Circuit Current Ratings (SCCR)
- Clip, Copper Alloy, Tin Plated with Patented Reject Member
- Quick Connect Standard with Screw (S) or Sems Pressure (SP)
- RoHS Compliant

6CC30A3SQ



## Class CC Enclosed – 600 Volt

Catalog Number	Indicating	Pole	Amp	Base Material	Wire Range
6SC30A1-B		1			
6SC30A2-B	No	2	30	Thermoplastic	#6 - #14 AWG CU
6SC30A3-B		3			
6SC30A4-B		4			
6SC30A11-B		1			
6SC30A21-B	Yes	2	30	Thermoplastic	#6 - #14 AWG CU
6SC30A31-B		3			
6SC30A41-B		4			

### Specifications:

- Tested and Approved for 200,000 RMS Symmetrical Amps Withstand Rating and Short Circuit Current Ratings (SCCR)
- Touchsafe Design IEC Type IP20
- DIN Rail Mount (35mm)
- Blown Fuse Indication Available
- Handle Allows Quick Easy Fuse Change
- Indication Light AC and DC – 80 volts minimum
- RoHS Compliant

6SC30A3-B



## Midget Enclosed – 600 Volt

Catalog Number	Indicating	Pole	Amp	Base Material	Wire Range
6SM30A1-B		1			
6SM30A2-B	No	2	30	Thermoplastic	#6 - #14 AWG CU
6SM30A3-B		3			
6SM30A4-B		4			
6SM30A11-B		1			
6SM30A21-B	Yes	2	30	Thermoplastic	#6 - #14 AWG CU
6SM30A31-B		3			
6SM30A41-B		4			

### Specifications:

- Tested and Approved for 100,000 RMS Symmetrical Amps Withstand Rating and Short Circuit Current Ratings (SCCR)
- Touchsafe Design IEC Type IP20
- DIN Rail Mount (35mm)
- Blown Fuse Indication Available
- Handle Allows Quick Easy Fuse Change
- AC and DC Rated
- Indication Light AC and DC – 80 volts minimum
- RoHS Compliant

6SM30A31-B

