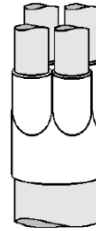


Heat Shrink Products

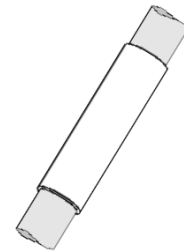
Breakout Boots - 1KV

	Body Range (inches)	Leg Range (inches)	No. of Legs	
CBR2-1A	0.35 - 1.00	0.15 - 0.53	2	1
CBR2-2A	1.25 - 1.70	0.30 - 0.75	2	1
CBR2-3A	1.65 - 3.00	0.65 - 1.40	2	1
CBR3-1A	0.50 - 1.35	0.20 - 0.55	3	1
CBR3-2A	0.85 - 2.20	0.35 - 0.90	3	1
CBR3-3A	1.10 - 2.90	0.50 - 1.25	3	1
CBR3-4A	2.35 - 5.65	1.20 - 2.10	3	1
CBR4-1A	0.70 - 1.25	0.15 - 0.45	4	1
CBR4-2A	1.00 - 2.10	0.35 - 0.90	4	1
CBR4-3A	1.20 - 3.50	0.55 - 1.40	4	1
CBR4-4A	2.35 - 6.05	0.90 - 1.50	4	1



48" Long - Heavy Wall Tubing with Adhesive - 1KV

	Range (inches)	
WCSM12/3-1200S	0.14 - 0.39	1
WCSM16/4-1200S	0.18 - 0.55	1
WCSM24/6-1200S	0.26 - 0.87	1
WCSM34/8-1200S	0.35 - 1.22	1
WCSM48/12-1200S	0.51 - 1.73	1
WCSM56/16-1200S	0.69 - 1.97	1
WCSM70/20-1200S	0.87 - 2.48	1
WCSM110-30-1200S	1.30 - 3.94	1
WCSM130/35-1200S	1.49 - 4.65	1



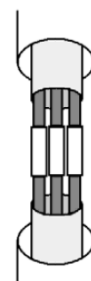
End Caps - 1KV

	Range (inches)	
ESC1A	.15 - .30	1
ESC2A	.30 - .70	1
ESC3A	.65 - 1.25	1
ESC4A	1.05 - 1.95	1
ESC5A	1.30 - 2.65	1
ESC6A	1.85 - 3.70	1
ESC7A	2.95 - 4.50	1



Teck Cable Splice Kits - Aluminum/Copper

	Description	Wire Range (inches)	
TS14-4-3	1KV, 3 Conductor	#14 - #4	1
TS2-3/0-3	1KV, 3 Conductor	#2 - 3/0	1
TS4/0-400-3	1KV, 3 Conductor	4/0 - 400Mcm	1
TS500-1000-3	1KV, 3 Conductor	500 - 1000Mcm	1
TS14-4-4	1KV, 4 Conductor	#14 - #4	1
TS2-3/0-4	1KV, 4 Conductor	#2 - 3/0	1
TS4/0-400-4	1KV, 4 Conductor	4/0 - 400Mcm	1
TS500-1000-4	1KV, 4 Conductor	500 - 1000Mcm	1
TS5-3-2/0-3	5KV, 3 Conductor	#3 - 2/0	1
TS5-3/0-400-3	5KV, 3 Conductor	3/0 - 400Mcm	1
TS5-500-1000-3	5KV, 3 Conductor	500 - 1000Mcm	1



Compression Sleeves Not Included

Suitable for Direct Burial

Wraparound Cable Support Sleeves - 10" Length

	Wire Range (inches)	
WCSS170/35	.35 - 1.70	1
WCSS280/60	.60 - 2.80	1
WCSS360/100	1.00 - 3.60	1
WCSS470/110	1.10 - 4.70	1

