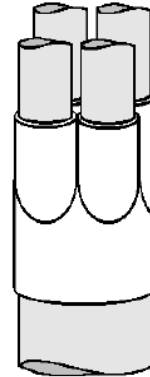


Heat Shrink Products

Catalog # **Description**

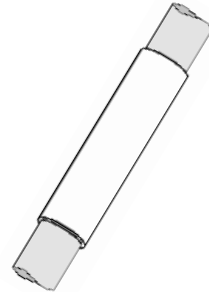
Breakout Boots

	<u>Body Range</u> <u>(Inches)</u>	<u>Leg Range</u> <u>(Inches)</u>	<u>No. of</u> <u>Legs</u>
CBR2-1A	.035 - 1.00	0.15 - 0.53	2
CBR2-2A	1.25 - 1.70	0.30 - 0.75	2
CBR2-3A	1.65 - 3.00	0.65 - 1.40	2
CBR3-1A	0.50 - 1.35	0.20 - 0.55	3
CRB3-2A	0.85 - 2.20	0.35 - 0.90	3
CBR3-3A	1.10 - 2.90	0.50 - 1.25	3
CBR3-4A	2.35 - 5.65	1.20 - 2.10	3
CBR4-1A	0.70 - 1.25	0.15 - 0.45	4
CBR4-2A	1.00 - 2.10	0.35 - 0.90	4
CBR4-3A	1.20 - 3.50	0.55 - 1.40	4
CBR4-4A	2.35 - 6.05	0.90 - 1.50	4



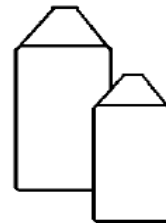
48" Long Heavy Wall Heat Shrink with Adhesive

	<u>Range (Inches)</u>
WCSM12/3-1200S	0.14 - 0.39
WCSM16/4-1200S	0.18 - 0.55
WCSM24/6-1200S	0.26 - 0.87
WCSM34/8-1200S	0.35 - 1.22
WCSM48/12-1200S	0.51 - 1.73
WCSM56/16-1200S	0.69 - 1.97
WCSM70/20-1200S	0.87 - 2.48
WCSM110-30-1200S	1.30 - 3.94
WCSM130/35-1200S	1.49 - 4.65



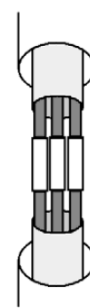
End Caps

	<u>Range (Inches)</u>
ESC1A	0.15 - 0.30
ESC2A	0.30 - 0.70
ESC3A	0.65 - 1.25
ESC4A	1.05 - 1.95
ESC5A	1.30 - 2.65
ESC6A	1.85 - 3.70
ESC7A	2.95 - 4.50



Teck Cable Splice Kits - Aluminum/Copper

	<u>KV / and Number of</u> <u>Conductors</u>	<u>Wire Range</u> <u>(inches)</u>
TS14-4-4	1KV / 3 or 4 Cond.	#14 - #4
TS2-3/0-4	1KV / 3 or 4 Cond.	#2 - 3/0
TS4/0-400-4	1KV / 3 or 4 Cond.	4/0 - 400 Mcm
TS500-1000-4	1KV / 3 or 4 Cond.	500 - 1000 Mcm
TS5-3/0-400-3	5KV / 3 Cond.	3/0 - 400 Mcm
TS5-3-2/0-3	5KV / 3 Cond.	#3 - 2/0
TS5-500-1000-3	5KV / 3 Cond.	500 - 1000 Mcm



Wraparound Cable Support Sleeves - 10" Length

	<u>Wire Range (Inches)</u>
WCSS170-35	0.35 - 1.70
WCSS280/60	0.60 - 2.80
WCSS360/100	1.00 - 3.60
WCSS470-110	1.10 - 4.70

