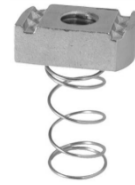


# Strut Fittings

Catalog #	Description	Std. Pkg.	Net Price
<b>Spring Nuts - Regular Spring</b>			
C6-1420RS	1/4" - 20	100	
C7RS	5/16" - 18	100	
C8RS	3/8" - 16	100	
C10RS	1/2" - 13	100	
C12RS	5/8" - 11	100	
C13RS	3/4" - 10	100	

Stainless Steel, Short, Long or No Spring versions are available



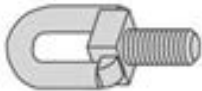
## Eyelets

C202*	Eyelet	25
C205*	Eyelet with Stud	25
C204*	Linked Eyelets	25
C203*	Linked Eyelets with Stud	25

\*Specify 3/8" or 1/2"



C202



C205



C204



C203

## Flat Plate Fittings

C601	2 Hole Splice Plate	50
C602	3 Hole Splice Plate	25
C723	4 Hole Splice Plate	25
C718	3 Hole Flat Angle Plate	50
C719	4 Hole Flat Angle Plate	20
C714	T Plate	25
C712	Cross Plate	10
C619*	Square Washer	10

\*Specify Hole Size



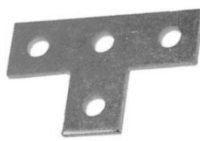
Splice Plates



C718



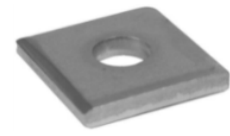
C719



C714



C712



C619

## 90 Degree Fittings

C603	2 Hole End Angle	50
C604	2 Hole Corner Angle	50
C605	3 Hole Corner Angle	25
C607	4 Hole Corner Angle	25



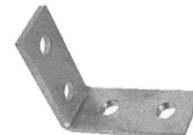
C603



C604



C605



C607

# Strut Fittings

Catalog #	Description	Std. Pkg.	Net Price
<b>Angle Fittings</b>			
C793*	4 Hole Closed Angle	25	
C781*	4 Hole Open Angle	25	
C624*	2 Hole Closed Angle	25	
C633*	2 Hole Open Angle	25	
PS9402	2 Hole Hinge Connector	1	
PS9403	3 Hole Hinge Connector	1	
PS9404	4 Hole Hinge Connector	1	

\*Specify Angle



C793



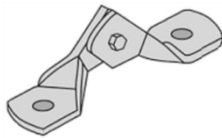
C781



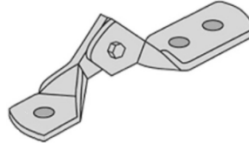
C624



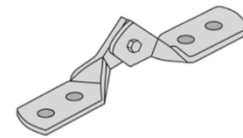
C633



PS9402



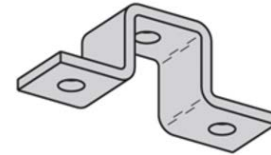
PS9403



PS9404

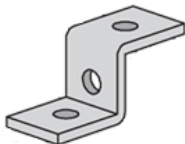
## U Support, Zee Fittings and Joiners

C613	U Support	15	
C611	Z Fitting - 1-5/8" Channel	15	
C612	Z Fitting - 1" Channel	25	
C631	2 Hole Strut Joiner	25	
C616	4 Hole Strut Joiner	10	
C649A*	Strut Joiner - Stamped Steel	25	

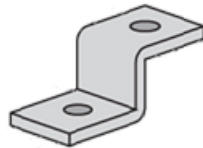


C613

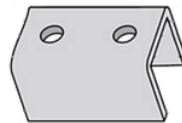
\*Includes Flat Head Machine Screws and 4 Hole Splice Plate Nut



C611



C612



C631



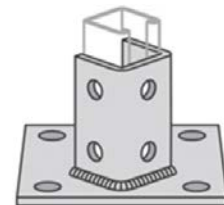
C616



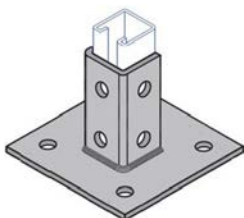
C649A

## Post Bases

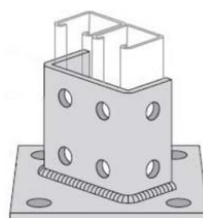
C3033	Single Post Base - Offset	5	
C3033SQ	Single Post Base - Square	5	
C3064	Double Post Base - Offset	5	
C3064SQ	Double Post Base - Square	5	



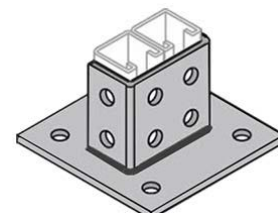
C3033



C3033SQ



C3064



C3064SQ

# Strut Fittings

**Catalog #**                      **Description**                      **Std. Pkg. Net Price**

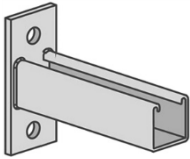
## Brackets

<b>C3373</b>	Universal Corner Connector	10
<b>C651*</b>	Reversible Channel Bracket	1
<b>C809*</b>	Double Channel Bracket	1
<b>C3282*</b>	Cable Tray Strut Bracket	1
<b>C732*</b>	Shelf Bracket	1

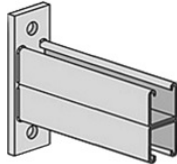
\*Specify Length Required



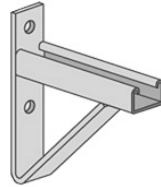
**C3373**



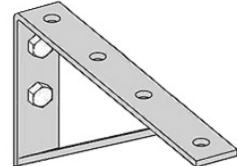
**C651**



**C809**



**C3282**



**C732**

## Beam Clamps

<b>C684S</b>	Beam Clamp	10
<b>C685S</b>	Beam Clamp	10
<b>C686</b>	Beam Clamp	10
<b>C855S</b>	Angular "I" Beam Clamp	15
<b>C2651</b>	U-Bolt Style Clamp - Double Strut	25
<b>C2652</b>	U-Bolt Style Clamp - Single Strut	25
<b>C907S</b>	"I" Beam Clamp	25
<b>C2622</b>	Beam Clamp	25
<b>C2654</b>	Column Bracket	25
<b>C858*</b>	Heavy Duty Clamp - 7/8" Jaw Opening	1
<b>C865*</b>	Heavy Duty Clamp - 1-21/32" Jaw Opening	1
<b>PS86*</b>	C Clamp	1
<b>PS93*</b>	Universal C Clamp - 1-1/4" Jaw Opening	1
<b>PS94*</b>	Wide Throat C Clamp - 1-5/16" Jaw Opening	1

\*Specify 3/8", 1/2" or 5/8"



**C684S**



**C685S**



**C686**



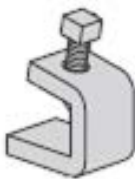
**C855S**



**C2651**



**C2652**



**C907S**



**C2622**



**C2654**



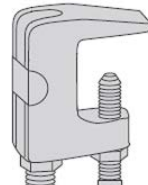
**C858**



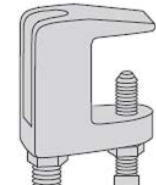
**C865**



**PS86**



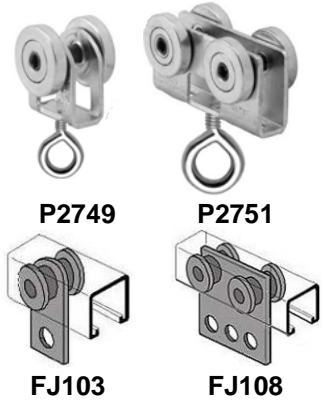
**PS93**



**PS94**

# Strut Fittings

Catalog #	Description	Std. Pkg.	Net Price
<b><u>Trolleys</u></b>			
P2749	2 Wheel Trolley with Eye-Bolt	1	
P2751	4 Wheel Trolley with Eye-Bolt	1	
FJ103	2 Wheel Flat Bar Trolley	1	
FJ108	4 Wheel Flat Bar Trolley	1	

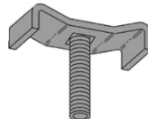


## **Miscellaneous Fittings**

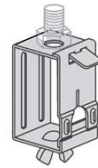
C2625	Wiring Stud Nut - 1/2" Thread	25	
C2636	Fixture Stud Nut - 1/4" Thread	2	
C2631	Swing Gate Fixture Hanger	10	
C655	Hammer-In Steel End Cap	100	
PS6153-2GY	Rubber End Cap - Grey	10	
PS6154	Plastic Profile End Cap	10	
PS707P	Plastic Closure Strip - Grey	10	



C2625



C2636



C2631



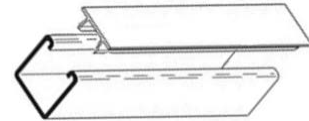
C655



PS6153-2GY



PS6154



PS707P

## **Adjustable "P" Clamps**

<u>Steel</u>	<u>Stainless Steel</u>	<u>Range (inches)</u>	
C55	C55SS	.050 - .550	100
C81	C81SS	.250 - .840	100
C110	C110SS	.810 - 1.100	100
C135	C135SS	.850 - 1.350	100
C175	C175SS	1.250 - 1.750	50
C205	C205SS	1.550 - 2.050	50
C250	C250SS	2.000 - 2.500	50
C300	C300SS	2.500 - 3.000	50
C325	C325SS	2.750 - 3.325	50
C375	C375SS	3.250 - 3.750	25
C425	C425SS	3.750 - 4.250	25
C475	C475SS	4.250 - 4.750	25



## **EMT Pipe Straps - 2 Piece**

C1025	3/8"	100
C1026	1/2"	100
C1027	3/4"	100
C1028	1"	100
C1029	1-1/4"	50
C1030	1-1/2"	50
C1031	2"	50
C1132*	2-1/2"	50
C1133*	3"	50
C1134*	3-1/2"	25
C1135*	4"	25



\* Universal both EMT and Rigid

# Strut Fittings

Catalog #	Description	Std. Pkg.	Net Price
-----------	-------------	-----------	-----------

## Rigid Pipe Straps - 2 Piece

### Steel

C1125	3/8"	100
C1126	1/2"	100
C1127	3/4"	100
C1128	1"	100
C1129	1-1/4"	50
C1130	1-1/2"	50
C1131	2"	50
C1132	2-1/2"	50
C1133	3"	50
C1134	3-1/2"	25
C1135	4"	25
C1137	5"	25
C1138	6"	25
C1140	8"	25
C1100-10	10"	25
C1100-12	12"	25



Available in Stainless steel - see Page 65  
 Available in Hot Dipped Galvanized, Please Call

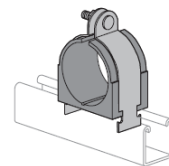
### Aluminum

C1126AL	1/2"	100
C1127AL	3/4"	100
C1128AL	1"	100
C1129AL	1-1/4"	50
C1130AL	1-1/2"	50
C1131AL	2"	50
C1132AL	2-1/2"	50
C1133AL	3"	50
C1134AL	3-1/2"	25
C1135AL	4"	25
C1137AL	5"	25

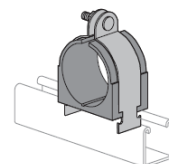


Many other strut items available, including:

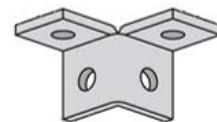
## Cush-A-Clamps for Pipes, Copper or Steel Tubing



## Porce-A-Clamps for Cable



## Winged Fittings



Please call us with all your strut fitting requirements