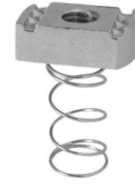


Strut Fittings

Spring Nuts - Regular Spring

| | Size | Std. Pkg. |
|-------|------------|-----------|
| FNS25 | 1/4" - 20 | 100 |
| C7RS | 5/16" - 18 | 100 |
| FNS38 | 3/8" - 16 | 100 |
| FNS50 | 1/2" - 13 | 100 |
| C12RS | 5/8" - 11 | 100 |
| C13RS | 3/4" - 10 | 100 |



Stainless Steel, Short, Long or No Spring versions are available

Flat Plate Fittings

| | Type | Std. Pkg. |
|--------|-------------------------|-----------|
| C601 | 2 Hole Splice Plate | 50 |
| C602GA | 3 Hole Splice Plate | 25 |
| C723GA | 4 Hole Splice Plate | 25 |
| C718GA | 3 Hole Flat Angle Plate | 50 |
| C719GA | 4 Hole Flat Angle Plate | 20 |
| C714GA | T Plate | 25 |
| C712 | Cross Plate | 10 |
| C619* | Square Washer | 10 |



Splice Plates

*Specify Hole Size



C718GA



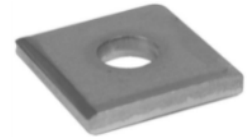
C719GA



C714GA



C712GA



C619

90 Degree Fittings

| | Type | Std. Pkg. |
|--------|---------------------|-----------|
| C603GA | 2 Hole End Angle | 50 |
| C604 | 2 Hole Corner Angle | 50 |
| C605GA | 3 Hole Corner Angle | 25 |
| C607GA | 4 Hole Corner Angle | 25 |



C603GA



C604



C605GA



C607GA

Strut Fittings

Angle Fittings

| | Type | Std. Pkg. |
|--------|------------------------|-----------|
| C793* | 4 Hole Closed Angle | 25 |
| C781* | 4 Hole Open Angle | 25 |
| C624* | 2 Hole Closed Angle | 25 |
| C633* | 2 Hole Open Angle | 25 |
| PS9402 | 2 Hole Hinge Connector | 1 |
| PS9403 | 3 Hole Hinge Connector | 1 |
| PS9404 | 4 Hole Hinge Connector | 1 |



C793

*Specify Angle



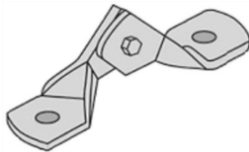
C781



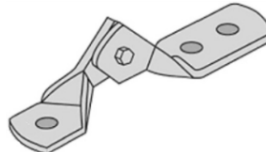
C624



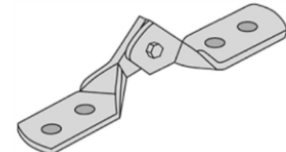
C633



PS9402



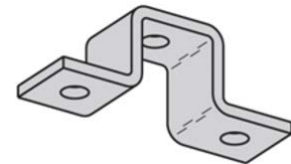
PS9403



PS9404

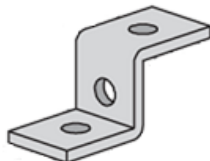
U Support Z Fittings & Joiners

| | Type | Std. Pkg. |
|--------|------------------------------|-----------|
| C613 | U Support | 15 |
| C611 | Z Fitting - 1-5/8" Channel | 15 |
| C612 | Z Fitting - 1" Channel | 25 |
| C631 | 2 Hole Strut Joiner | 25 |
| C616 | 4 Hole Strut Joiner | 10 |
| C649A* | Strut Joiner - Stamped Steel | 25 |

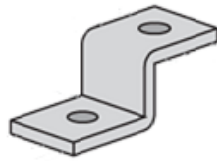


C613

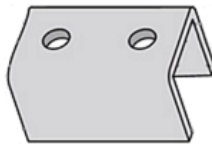
*Includes Flat Head Machine Screws and 4 Hole Splice Plate Nut



C611



C612



C631



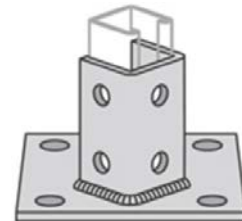
C616



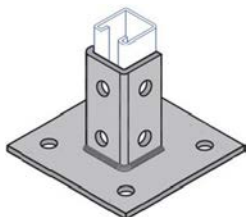
C649A

Post Bases

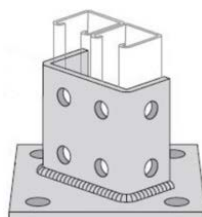
| | Type | Std. Pkg. |
|------------|---------------------------|-----------|
| C3033 | Single Post Base - Offset | 5 |
| PS3033SQGA | Single Post Base - Square | 5 |
| C3064 | Double Post Base - Offset | 5 |
| C3064SQ | Double Post Base - Square | 5 |



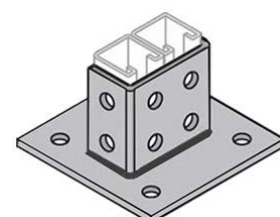
C3033



PS3033SQGA



C3064



C3064SQ

Strut Fittings

Beam Clamps

| | Type | Load Rating / Lbs. | Std. Pkg. |
|-------------------|---|--|-----------|
| C684S | I Beam Clamp | 500 | 10 |
| C685S | Beam Clamp | 450 | 10 |
| C686 | Beam Clamp | 600 with 12 ga. Channel 500 with 14 ga. Channel | 10 |
| PS855-1 | Angular I Beam Clamp | 500 | 15 |
| PS2651T1GA | U-Bolt Style Clamp - Double Strut | 1000 | 25 |
| PS2651T2GA | U-Bolt Style Clamp - Single Strut | 1000 | 25 |
| C907S | I Beam Clamp - 1/4" Stock Thickness | 450 | 25 |
| C998 | I Beam Clamp - 3/8" Stock Thickness | 900 | 25 |
| C2622 | Beam Clamp | 300 | 25 |
| C2654 | Column Bracket | 800 | 25 |
| C858* | C Clamp - 7/8" Jaw Opening | Varies with rod size - call | 1 |
| C865* | C Clamp - 1-21/32" Jaw Opening | Varies with rod size - call | 1 |
| PS86* | C Clamp | Varies with rod size - call | 1 |
| PS93* | Universal Top or Bottom C Clamp 1-1/4" Jaw Opening | Varies with rod size - call | 1 |
| PS94* | Wide Throat Top C Clamp 1-5/16" Jaw Opening | Varies with rod size - call | 1 |

***Specify Rod Size"**



C684S



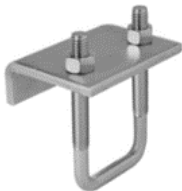
C685S



C686



PS855-1



PS2651T1GA



PS2651T2GA



C907S / C998



C2622



C2654



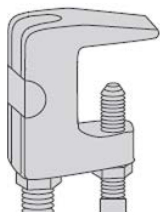
C858



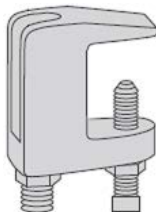
C865



PS86



PS93



PS94

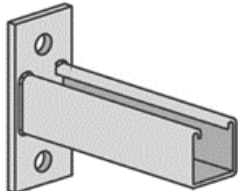
Strut Fittings

| Brackets | Type | Std. Pkg. |
|-----------------|--|-----------|
| C3373GA | Universal Corner Connector | 10 |
| C651* | Reversible Channel Bracket – 1-5/8 x 1-5/8 | 1 |
| C809* | Double Channel Bracket – 1-5/8 x 3-1/4 | 1 |
| C3282* | Cable Tray Strut Bracket – 1 x 1-5/8 | 1 |
| C732* | Shelf Bracket | 1 |

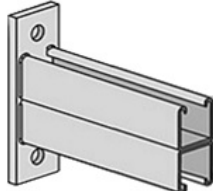
*Specify Length Required



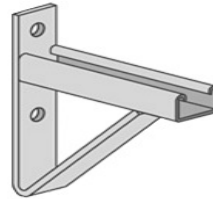
C3373GA



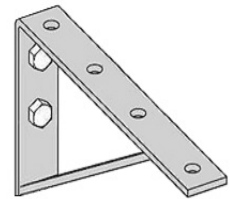
C651



C809



C3282



C732

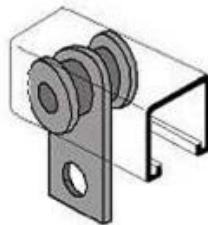
| Trolleys | Type | Std. Pkg. |
|-----------------|-------------------------------|-----------|
| P2749 | 2 Wheel Trolley with Eye-Bolt | 1 |
| P2751 | 4 Wheel Trolley with Eye-Bolt | 1 |
| FJ103 | 2 Wheel Flat Bar Trolley | 1 |
| FJ108 | 4 Wheel Flat Bar Trolley | 1 |



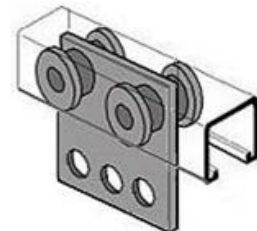
P2749



P2751



FJ103

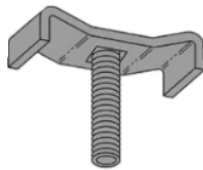


FJ108

| Miscellaneous Fittings | Std. Pkg. |
|-------------------------------|------------------------------------|
| C2625 | Wiring Stud Nut - 1/2" Thread 25 |
| C2636 | Fixture Stud Nut - 1/4" Thread 200 |
| C2631 | Swing Gate Fixture Hanger 10 |
| C655 | Hammer-In Steel End Cap 100 |
| PS6153-2GY | Rubber End Cap - Grey 10 |
| PS6154-2GY | Plastic Profile End Cap - Grey 10 |
| PS707P | Plastic Closure Strip - Grey 10 |



C2625



C2636



C655



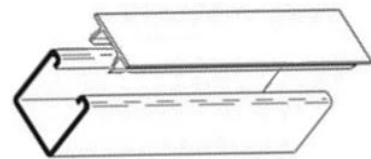
C2631



PS6153-2GY



PS6154



PS707P

Strut Fittings

EMT Pipe Straps - 2 Piece

| | Size | Std. Pkg. |
|--------|--------|-----------|
| C1025 | 3/8" | 100 |
| C1026 | 1/2" | 100 |
| C1027 | 3/4" | 100 |
| C1028 | 1" | 100 |
| C1029 | 1-1/4" | 50 |
| C1030 | 1-1/2" | 50 |
| C1031 | 2" | 50 |
| CL250* | 2-1/2" | 50 |
| CL300* | 3" | 50 |
| C1134* | 3-1/2" | 25 |
| CL400* | 4" | 25 |

* Universal both EMT and Rigid



Rigid Pipe Straps - 2 Piece

| Steel | Size | Std. Pkg. |
|----------|--------|-----------|
| C1125 | 3/8" | 100 |
| CL050 | 1/2" | 100 |
| CL075 | 3/4" | 100 |
| CL100 | 1" | 100 |
| CL125 | 1-1/4" | 50 |
| CL150 | 1-1/2" | 50 |
| CL200 | 2" | 50 |
| CL250 | 2-1/2" | 50 |
| CL300 | 3" | 50 |
| C1134 | 3-1/2" | 25 |
| CL400 | 4" | 25 |
| C1137 | 5" | 25 |
| C1138 | 6" | 25 |
| C1140 | 8" | 25 |
| C1100-10 | 10" | 25 |
| C1100-12 | 12" | 25 |



Available in Stainless steel - see Page 72

Available in Hot Dipped Galvanized, Please Call

| Aluminum | Size | Std. Pkg. |
|----------|--------|-----------|
| C1126AL | 1/2" | 100 |
| C1127AL | 3/4" | 100 |
| C1128AL | 1" | 100 |
| C1129AL | 1-1/4" | 50 |
| C1130AL | 1-1/2" | 50 |
| C1131AL | 2" | 50 |
| C1132AL | 2-1/2" | 50 |
| C1133AL | 3" | 50 |
| C1134AL | 3-1/2" | 25 |
| C1135AL | 4" | 25 |
| C1137AL | 5" | 25 |



Strut Fittings

Adjustable Pipe and Cable Clamps

| Steel | Conduit Size | Range (inches) | Std. Pkg. |
|--------------|---------------------|----------------|-----------|
| PCC050PG | 1/2" RIGID OR EMT | .650 - .890 | 100 |
| PCC075PG | 3/4" RIGID OR EMT | .860 - 1.110 | 100 |
| PCC100PG | 1" RIGID OR EMT | 1.100 - 1.400 | 100 |
| PCC125GG | 1-1/4" RIGID OR EMT | 1.400 - 1.725 | 50 |
| PCC150PG | 1-1/2" RIGID OR EMT | 1.690 - 1.980 | 50 |
| PCC200PG | 2" RIGID OR EMT | 1.980 - 2.576 | 50 |
| PCC250PG | 2-1/2" RIGID OR EMT | 2.576 - 3.060 | 25 |
| PCC300PG | 3" RIGID OR EMT | 3.060 - 3.625 | 25 |
| PCC350PG | 3-1/2" RIGID OR EMT | 3.626 - 4.126 | 25 |
| PCC400PG | 4" RIGID OR EMT | 4.126 - 4.626 | 25 |

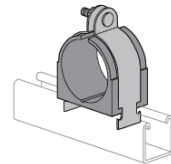


| Stainless Steel | Conduit Size | Range (inches) | Std. Pkg. |
|------------------------|------------------------------------|----------------|-----------|
| C55SS | - | .050 - .550 | 100 |
| C81SS | 3/8" & 1/2" RIGID OR EMT | .250 - .840 | 100 |
| C135SS | 3/4" & 1" RIGID OR EMT | .850 - 1.350 | 100 |
| C175SS | 1" & 1-1/4" RIGID / 1-1/4" EMT | 1.250 - 1.750 | 50 |
| C205SS | 1-1/4" & 1-1/2" RIGID / 1-1/2" EMT | 1.550 - 2.050 | 50 |
| C250SS | 2" RIGID OR EMT | 2.000 - 2.500 | 50 |
| C300SS | 2-1/2" RIGID OR EMT | 2.500 - 3.000 | 50 |
| C375SS | 3" RIGID OR EMT | 3.250 - 3.750 | 25 |
| C425SS | 3-1/2" RIGID OR EMT | 3.750 - 4.250 | 25 |
| C475SS | 4" RIGID OR EMT | 4.250 - 4.750 | 25 |

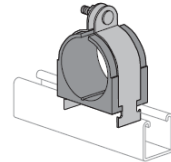


Many other strut items available, including:

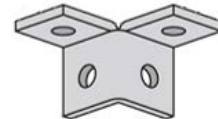
Cush-A-Clamps for Pipes, Copper or Steel Tubing



Porc-A-Clamps for Cable



Winged Fittings



Please call us with all your strut fitting requirements