

Stainless Steel – Gibson Stainless & Specialty Inc

Conduit

Type 304SS

Type 316SS

Catalog #	Catalog #	Size	Std. Length
CND50-304	CND50-316	1/2"	10 FEET
CND75-304	CND75-316	3/4"	10 FEET
CND100-304	CND100-316	1"	10 FEET
CND125-304	CND125-316	1-1/4"	10 FEET
CND150-304	CND150-316	1-1/2"	10 FEET
CND200-304	CND200-316	2"	10 FEET
CND250-304	CND250-316	2-1/2"	10 FEET
CND300-304	CND300-316	3"	10 FEET
CND350-304	CND350-316	3-1/2"	10 FEET
CND400-304	CND400-316	4"	10 FEET

Note: standard freight terms do not apply



Conduit Couplings

Type 304SS

Type 316SS

Catalog #	Catalog #	Size	Std. Pkg,
CPL50-304	CPL50-316	1/2"	1
CPL75-304	CPL75-316	3/4"	1
CPL100-304	CPL100-316	1"	1
CPL125-304	CPL125-316	1-1/4"	1
CPL150-304	CPL150-316	1-1/2"	1
CPL200-304	CPL200-316	2"	1
CPL250-304	CPL250-316	2-1/2"	1
CPL300-304	CPL300-316	3"	1
CPL350-304	CPL350-316	3-1/2"	1
CPL400-304	CPL400-316	4"	1



Conduit Elbows – 90°

Type 304SS

Type 316SS

Catalog #	Catalog #	Size	Std. Pkg,
ELB50-304	ELB50-316	1/2"	1
ELB75-304	ELB75-316	3/4"	1
ELB100-304	ELB100-316	1"	1
ELB125-304	ELB125-316	1-1/4"	1
ELB150-304	ELB150-316	1-1/2"	1
ELB200-304	ELB200-316	2"	1
ELB250-304	ELB250-316	2-1/2"	1
ELB300-304	ELB300-316	3"	1
ELB350-304	ELB350-316	3-1/2"	1
ELB400-304	ELB400-316	4"	1



Conduit Elbows – 45°

Type 304SS

Type 316SS

Catalog #	Catalog #	Size	Std. Pkg,
ELB50-45-304	ELB50-45-316	1/2"	1
ELB75-45-304	ELB75-45-316	3/4"	1
ELB100-45-304	ELB100-45-316	1"	1
ELB125-45-304	ELB125-45-316	1-1/4"	1
ELB150-45-304	ELB150-45-316	1-1/2"	1
ELB200-45-304	ELB200-45-316	2"	1
ELB250-45-304	ELB250-45-316	2-1/2"	1
ELB300-45-304	ELB300-45-316	3"	1
ELB350-45-304	ELB350-45-316	3-1/2"	1
ELB400-45-304	ELB400-45-316	4"	1



Conduit Nipples

Type 304SS

Type 316SS

Catalog #	Catalog #	Size	Std. Pkg.
NIP50X*-304	NIP50X*-316	1/2"	1
NIP75X*-304	NIP75X*-316	3/4"	1
NIP100X*-304	NIP100X*-316	1"	1
NIP125X*-304	NIP125X*-316	1-1/4"	1
NIP150X*-304	NIP150X*-316	1-1/2"	1
NIP200X*-304	NIP200X*-316	2"	1



Replace * with Required Length

Conduit Bodies c/w Cover & Gasket - Type 316SS

LB	LL	LR	Size	Std. Pkg.
Catalog #			Size	Std. Pkg.
7050LB	7050LL	7050LR	1/2"	1
7075LB	7075LL	7075LR	3/4"	1
7100LB	7100LL	7100LR	1"	1
7125LB			1-1/4"	1
7150LB	7150LL	7150LR	1-1/2"	1
7200LB	7200LL	7200LR	2"	1
7250LB			2-1/2"	1
7300LB			3"	1
7400LB			4"	1



C	T	TB	X	Size	Std. Pkg.
Catalog #				Size	Std. Pkg.
7050C	7050T	7050TB		1/2"	1
7075C	7075T	7075TB	7075X	3/4"	1
7100C	7100T	7100TB	7100X	1"	1
	7125T	7125TB		1-1/4"	1
7150C	7150T	7150TB		1-1/2"	1
7200C	7200T	7200TB		2"	1
	7250T			2-1/2"	1
	7300T			3"	1
	7400T			4"	1



Hubs - Type 316SS

Standard	Grounding	Size	Std. Pkg.
Catalog #	Catalog #	Size	Std. Pkg.
7050HUB	7050G-HUB	1/2"	1
7075HUB	7075G-HUB	3/4"	1
7100HUB	7100G-HUB	1"	1
7125HUB	7125G-HUB	1-1/4"	1
7150HUB	7150G-HUB	1-1/2"	1
7200HUB	7200G-HUB	2"	1
7250HUB	7250G-HUB	2-1/2"	1
7300HUB	7300G-HUB	3"	1
7400HUB	7400G-HUB	4"	1



Conduit Straps - Type 316SS

One Hole		Two Hole			
Catalog #	Catalog #	Size	Std. Pkg.		
	3038-2	3/8"	1		
3050	3050-2	1/2"	1		
3075	3075-2	3/4"	1		
3100	3100-2	1"	1		
3125	3125-2	1-1/4"	1		
3150	3150-2	1-1/2"	1		
3200	3200-2	2"	1		
3250	3250-2	2-1/2"	1		
3300	3300-2	3"	1		
3350	3350-2	3-1/2"	1		
3400	3400-2	4"	1		



Clamp Backs - Type 316SS

Catalog #	Size	Std. Pkg.
CBS3050	1/2"	1
CBS3075	3/4"	1
CBS3100	1"	1
CBS3125	1-1/4"	1
CBS3150	1-1/2"	1
CBS3200	2"	1
CBS3250	2-1/2"	1
CBS3300	3"	1
CBS3350	3-1/2"	1
CBS3400	4"	1



Conduit Caps - Type 316SS

Catalog #	Size	Std. Pkg.
CAP50	1/2"	1
CAP75	3/4"	1
CAP100	1"	1
CAP125	1-1/4"	1
CAP150	1-1/2"	1
CAP200	2"	1
CAP250	2-1/2"	1
CAP300	3"	1
CAP400	4"	1



Floor Flanges - Type 316SS

Catalog #	Size	Std. Pkg.
FF50	1/2"	1
FF75	3/4"	1
FF100	1"	1
FF125	1-1/4"	1
FF150	1-1/2"	1
FF200	2"	1



Pulling Elbows - Type 316SS

Catalog #	Size	Std. Pkg.
PE50	1/2"	1
PE75	3/4"	1
PE100	1"	1
PE150	1-1/2"	1
PE200	2"	1



Three Piece Couplings - Type 316SS

Catalog #	Size	Std. Pkg.
TPC50	1/2"	1
TPC75	3/4"	1
TPC100	1"	1
TPC125	1-1/4"	1
TPC150	1-1/2"	1
TPC200	2"	1



Chase Nipples - Type 316SS

Catalog #	Size	Std. Pkg.
CHASE50	1/2"	1
CHASE75	3/4"	1
CHASE100	1"	1
CHASE125	1-1/4"	1
CHASE150	1-1/2"	1
CHASE200	2"	1
CHASE250	2-1/2"	1
CHASE300	3"	1
CHASE400	4"	1



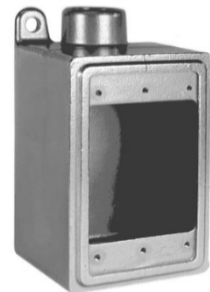
Locknuts - Type 316SS

Standard	Grounding	Size	Std. Pkg.
Catalog #	Catalog #		
8050	8050G	1/2"	1
8075	8075G	3/4"	1
8100	8100G	1"	1
8125	8125G	1-1/4"	1
8150	8150G	1-1/2"	1
8200	8200G	2"	1
8250	8250G	2-1/2"	1
8300	8300G	3"	1
8400	8400G	4"	1



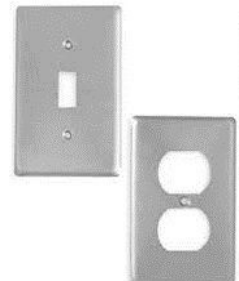
Device Boxes - Type 316SS

Catalog #	Gang	Type	Size	Std. Pkg.
FD75	Single	Dead End	3/4"	1
FDA75	Single	Back Entry	3/4"	1
FDC75	Single	Pull Thru	3/4"	1
FDS75	Single	2 Entry on Same Side	3/4"	1
FDCT75	Single	T Pattern	3/4"	1
FDX75	Single	X Pattern	3/4"	1
FDDC75	Double	Pull Thru	3/4"	1
FDDX75	Double	X Pattern	3/4"	1



Device Box Covers - Type 316SS

Catalog #	Gang	Type	Std. pkg.
7000BC	Single	Blank (Cast)	1
7000BF	Single	Blank (Formed)	1
7000RF	Single	Duplex Receptacle (Formed)	1
7000SF	Single	Switch (Formed)	1
7000GFCI	Single	GFCI (Formed)	1
7000BC2	Double	Blank (Cast)	1
7000BF2	Double	Blank (Formed)	1



Conduit Hangers - Type 316SS

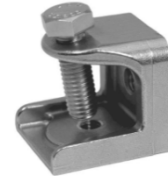
Catalog #	Size	Std. Pkg.
6050	1/2"	1
6075	3/4"	1
6100	1"	1
6125	1-1/4"	1
6150	1-1/2"	1
6200	2"	1
6250	2-1/2"	1
6300	3"	1
6400	4"	1



Beam Clamps - Type 316SS

2000 Series

Catalog #	Size	Std. Pkg.
2001	1/4"	1
2003	3/8"	1
2004	1/2"	1



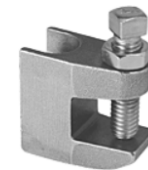
2100 Series

Catalog #	Size	Std. Pkg.
2103	3/8"	1
2104	1/2"	1



Junior Top

Catalog #	Size	Std. Pkg.
JTB375	3/8"	1
JTB500	1/2"	1



Right Angle

Catalog #	Size	Std. Pkg.
1050	1/2"	1
1075	3/4"	1
1100	1"	1
1125	1-1/4"	1
1150	1-1/2"	1
1200	2"	1
1250	2-1/2"	1
1300	3"	1
1350	3-1/2"	1
1400	4"	1
1600	6"	1



Parallel

Catalog #	Size	Std. Pkg.
4075	3/4"	1
4100	1"	1



Sealtite Connectors - Type 316SS

Straight

90 Degree

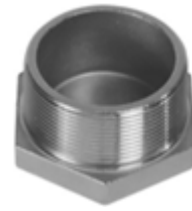
45 Degree

	Catalog #	Size	Std. Pkg.	
LTC50SS	LTC9050SS	LTC4550SS	1/2"	1
LTC75SS	LTC9075SS	LTC4575SS	3/4"	1
LTC100SS	LTC90100SS	LTC45100SS	1"	1
LTC125SS	LTC90125SS	LTC45125SS	1-1/4"	1
LTC150SS	LTC90150SS	LTC45150SS	1-1/2"	1
LTC200SS	LTC90200SS	LTC45200SS	2"	1



Threaded Plugs - Type 316SS

Hex Head	Socket		
Catalog #	Catalog #	Size	Std. Pkg.
	7025SP	1/4"	1
7038P	7038SP	3/8"	1
7050P	7050SP	1/2"	1
7075P	7075SP	3/4"	1
7100P	7100SP	1"	1
7125P	7125SP	1-1/4"	1
7150P	7150SP	1-1/2"	1
7200P	7200SP	2"	1
7250P		2-1/2"	1
7300P		3"	1
7400P		4"	1



Hex Head



Socket

Threaded Reducing Bushings - Type 316SS

Hex Head	Face (Flush)		
Catalog #	Catalog #	Size	Std. Pkg.
7500-RB50X25		1/2" X 1/4"	1
7500-RB50X38		1/2" X 3/8"	1
7500-RB75X25		3/4" X 1/4"	1
7500-RB75X38		3/4" X 3/8"	1
7500-RB75X50	7500-FB75X50	3/4" X 1/2"	1
7500-RB100X38		1" X 3/8"	1
7500-RB100X50	7500-FB100X50	1" X 1/2"	1
7500-RB100X75	7500-FB100X75	1" X 3/4"	1
7500-RB125X50	7500-FB125X50	1-1/4" X 1/2"	1
7500-RB125X75	7500-FB125X75	1-1/4" X 3/4"	1
7500-RB125X100	7500-FB125X100	1-1/4" X 1"	1
7500-RB150X50	7500-FB150X50	1-1/2" X 1/2"	1
7500-RB150X75	7500-FB150X75	1-1/2" X 3/4"	1
7500-RB150X100	7500-FB150X100	1-1/2" X 1"	1
7500-RB150X125	7500-FB150X125	1-1/2" X 1-1/4"	1
7500-RB200X50	7500-FB200X50	2" X 1/2"	1
7500-RB200X75	7500-FB200X75	2" X 3/4"	1
7500-RB200X100	7500-FB200X100	2" X 1"	1
7500-RB200X125	7500-FB200X125	2" X 1-1/4"	1
7500-RB200X150	7500-FB200X150	2" X 1-1/2"	1
7500-RB250X50		2-1/2" X 1/2"	1
7500-RB250X75		2-1/2" X 3/4"	1
7500-RB250X100		2-1/2" X 1"	1
7500-RB250X125		2-1/2" X 1-1/4"	1
7500-RB250X150		2-1/2" X 1-1/2"	1
7500-RB250X200		2-1/2" X 2"	1
7500-RB300X100		3" X 1"	1
7500-RB300X125		3" X 1-1/4"	1
7500-RB300X150		3" X 1-1/2"	1
7500-RB300X200		3" X 2"	1
7500-RB300X250		3" X 2-1/2"	1
7500-RB400X125		4" X 1-1/4"	1
7500-RB400X150		4" X 1-1/2"	1
7500-RB400X200		4" X 2"	1
7500-RB400X250		4" X 2-1/2"	1
7500-RB400X300		4" X 3"	1



Hex Head



Face (Flush)

Hazardous Location EYS Fittings - Type 316SS

Catalog #	Size	Std. Pkg.
EYS75	3/4"	1
EYS100	1"	1



Hazardous Location Junction Boxes - Type 316SS

Catalog #	Configuration	Hub Size	Std. Pkg.
GUAC75SS	C	3/4"	1
GUAC100SS	C	1"	1
GUAT75SS	T	3/4"	1
GUAT100SS	T	1"	1
GUAX75SS	X	3/4"	1
GUAX100SS	X	1"	1
GUAB75SS	LB	3/4"	1
GUAB100SS	LB	1"	1
GUAL75SS	LL	3/4"	1
GUAL100SS	LL	1"	1



Insulated Bushings – Type 316SS

Catalog #	Size	Std. Pkg.
B50	1/2"	1
B75	3/4"	1
B100	1"	1
B125	1-1/4"	1
B150	1-1/2"	1
B200	2"	1



Grounding Insulated Bushings – Type 316SS

Catalog #	Wire Range	Size	Std. Pkg.
GB50S	4-14	1/2"	1
GB75S	4-14	3/4"	1
GB100S	4-14	1"	1
GB125S	4-14	1-1/4"	1
GB150S	4-14	1-1/2"	1
GB200S	4-14	2"	1
GB50L	3/0-6	1/2"	1
GB75L	3/0-6	3/4"	1
GB100L	3/0-6	1"	1
GB125L	3/0-6	1-1/4"	1
GB150L	3/0-6	1-1/2"	1



Strain Relief Grips - Type 316SS

Cord Grip

Cord Grip with Mesh

1/2"

Catalog #	Catalog #	Cable Range (inches)	Std. Pkg.
CG50-125188	CGM50-125188	.125 - .188	1
CG50-188250	CGM50-188250	.188 - .250	1
CG50-250313	CGM50-250313	.250 - .313	1
CG50-313375	CGM50-313375	.313 - .375	1
CG50-375438	CGM50-375438	.375 - .438	1
CG50-438500	CGM50-438500	.438 - .500	1
CG50-500563	CGM50-500563	.500 - .563	1
CG50-563610	CGM50-563610	.536 - .610	1



3/4"

Catalog #	Catalog #	Cable Range (inches)	Std. Pkg.
CG75-188250	CGM75-188250	.188 - .250	1
CG75-250313	CGM75-250313	.250 - .313	1
CG75-313375	CGM75-313375	.313 - .375	1
CG75-375438	CGM75-375438	.375 - .438	1
CG75-438500	CGM75-438500	.438 - .500	1
CG75-500563	CGM75-500563	.500 - .563	1
CG75-563625	CGM75-563625	.563 - .625	1
CG75-625688	CGM75-625688	.625 - .688	1
CG75-688750	CGM75-688750	.688 - .750	1
CG75-750810	CGM75-750810	.750 - .810	1



1"

Catalog #	Catalog #	Cable Range (inches)	Std. Pkg.
CG100-375438	CGM100-375438	.375 - .438	1
CG100-438500	CGM100-438500	.438 - .500	1
CG100-500563	CGM100-500563	.500 - .563	1
CG100-563625	CGM100-563625	.563 - .625	1
CG100-625688	CGM100-625688	.625 - .688	1
CG100-688750	CGM100-688750	.688 - .750	1
CG100-750813	CGM100-750813	.750 - .813	1

Support Grips - Single Eye, Split Mesh, Rod Closing

Catalog #	Cable Range (inches)	Approx. Break Strength (lbs.)	Std. Pkg.
SPSR050US	.50 - .62	1050	1
SPSR062US	.63 - .74	2050	1
SPSR075US	.75 - .99	2050	1
SPSR100US	1.00 - 1.24	2650	1
SPSR125US	1.25 - 1.49	4500	1
SPSR150US	1.50 - 1.74	4500	1
SPSR175US	1.75 - 1.99	6000	1
SPSR200US	2.00 - 2.49	8950	1
SPSR250US	2.50 - 2.99	7750	1
SPSR300US	3.00 - 3.49	8500	1



U-Bolts - Type 316SS

Standard

Figure 137 Style

Catalog #	Catalog #	Size	Std. Pkg.
0050	0050-137	1/2"	1
0075	0075-137	3/4"	1
0100	0100-137	1"	1
0125	0125-137	1-1/4"	1
0150	0150-137	1-1/2"	1
0200	0200-137	2"	1
0250	0250-137	2-1/2"	1
0300	0300-137	3"	1
0350	0350-137	3-1/2"	1
0400	0400-137	4"	1
0500		5"	1
0600		6"	1
0800		8"	1
01000		10"	1
01200		12"	1
01400		14"	1
01600		16"	1
01800		18"	1
02000		20"	1

U-Bolt Plates also Available



Strut Channel - 1-5/8 x 1-5/8

Type 304SS

Catalog #	Type	Std. Pkg.
PS200SS304	Solid	10 Feet
PS200SS304EH	With Elongated Holes	10 Feet

Type 316SS

Catalog #	Type	Std. Pkg.
PS200SS316	Solid	10 Feet
PS200SS316EH	With Elongated Holes	10 Feet

Note: standard freight terms do not apply

Post Bases -Type 316SS

Catalog #	Type	Std. Pkg.
5990PB1	Single Post Base - Square	1
5990PB2	Single Post Base - 45° Offset	1
5990PB3	Single Post Base - Flush Mount	1
5990PB4	Double Post Base - Square	1
5990PB5	Single Post Base - Narrow Foot	1



Spring Nuts - Type 316SS / Spring - Type 302SS

Catalog #	Size	Std. Pkg.
5911	1/4"	1
5912	5/16"	1
5913	3/8"	1
5914	1/2"	1
5915	5/8"	1



2 Piece Strut Straps - Type 316SS

Catalog #	Size	Std. Pkg.
5050	1/2"	1
5075	3/4"	1
5100	1"	1
5125	1-1/4"	1
5150	1-1/2"	1
5200	2"	1
5250	2-1/2"	1
5300	3"	1
5350	3-1/2"	1
5400	4"	1
5500	5"	1
5600	6"	1
5800	8"	1



Strut Fittings and Accessories - Type 316SS

Right Angle Beam Clamps

Catalog #	Size	Std. Pkg.
5990	1-5/8" x 1-5/8"	1
5990L	1-5/8" x 3-1/4"	1



Square Washer

Catalog #	Size	Std. Pkg.
5970-1/4	1/4"	1
5970-3/8	3/8"	1
5970-1/2	1/2"	1
5970-5/8	5/8"	1
5970-3/4	3/4"	1



90 Degree Angle Fittings

Catalog #	Size	Std. Pkg.
5971	2 Hole	1
5974	3 Hole	1
5973	4 Hole	1



Flat Fittings

Catalog #	Size	Std. Pkg.
5963	3 Hole 90 Degree	1
5964	4 Hole 90 Degree	1
5965	Cross Plate	1
5969	4 Hole Splice Plate	1
5966	Tee Plate	1



Other Stainless Steel Strut Fitting Available - Please Call